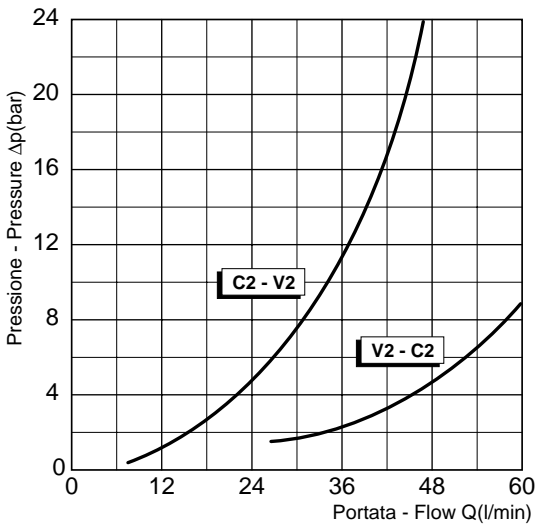
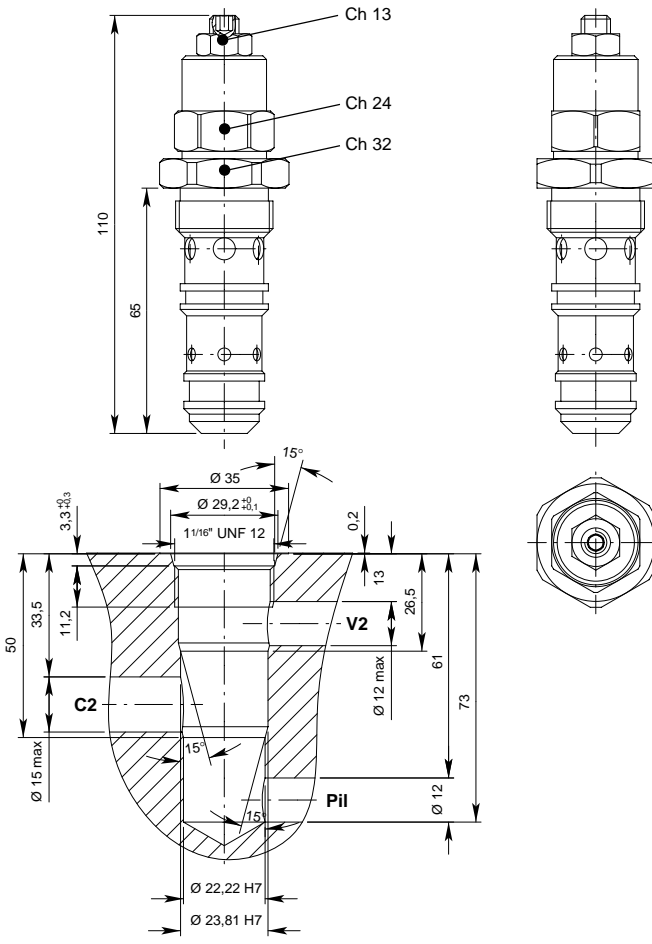
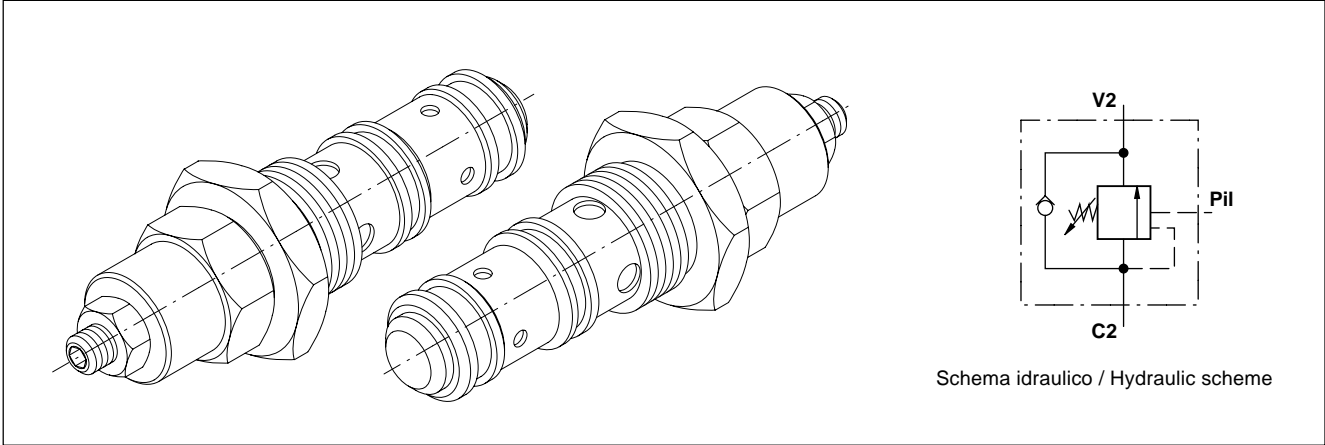


Valvola OVERCENTER a cartuccia
Pilot assisted OVERCENTER valve - cartridge style
mod. OVC60 - C

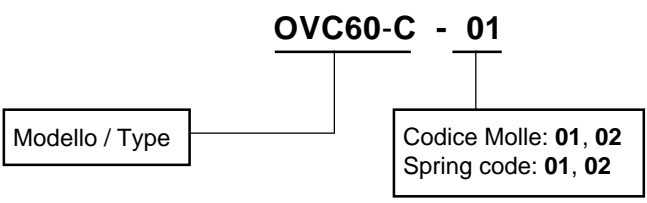


Modello Type	Portata max Max flow l / min	Rapporto pilotaggio Pilot ratio	Pressione massima Max pressure bar
OVC60-C	60	4,25/1	350

A richiesta rapporti di pilotaggio 3/1, 8/1 e 10/1.
Pilot ratios 3/1, 8/1 and 10/1 on request.

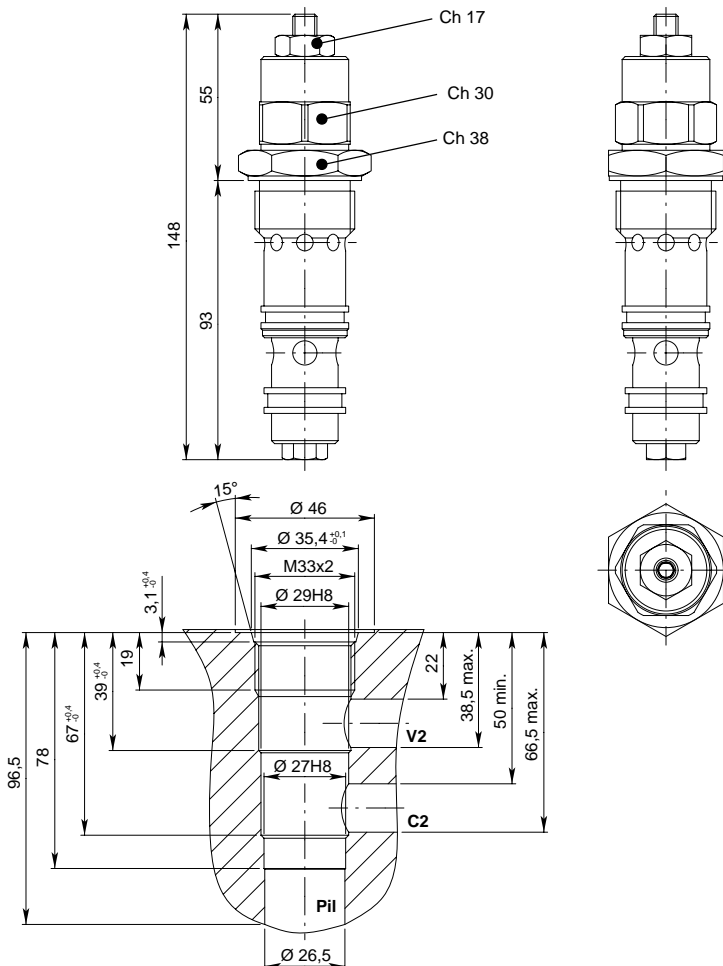
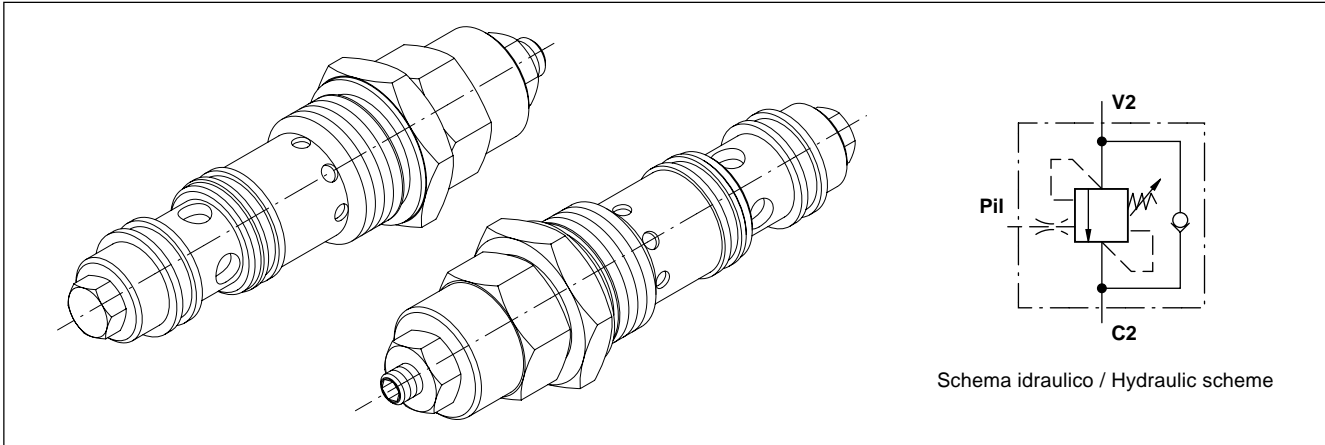
Tutti i dati forniti sono stati ottenuti usando olio con viscosità di circa 30 cSt a 50 °C. Campo di temperatura ammesso: -20 °C, +90 °C. Filtrazione assoluta: 25µ. I dati non sono impegnativi, CBF si riserva di apportare modifiche senza preavviso.
All performances and calibrations are carried out by using hydraulic oil with viscosity approx. 30 cSt at 50 °C. Temperature range: -20 °C, +90 °C. Filtration absolute: 25µ. The specifications are not binding, CBF reserves the right to introduce modifications without notice.

Sigla di ordinazione / Ordering code



Molle - Springs			
Codice Code	Taratura standard Standard setting bar (Q=5 l/min)	Campo di taratura Adj. pressure range bar	Colore Colour
01	100	20 ÷ 200	Bianco / White
02	280	50 ÷ 350	Nero / Black

Valvola OVERCENTER a cartuccia
Pilot assisted OVERCENTER valve - cartridge style
mod. OVC150 - C



Modello Type	Portata max Max flow l / min	Rapporto pilotaggio Pilot ratio	Pressione massima Max pressure bar
OVC150-C	150	4/1	350

A richiesta rapporti di pilotaggio 3/1, 8/1 e 10/1.
Pilot ratios 3/1, 8/1 and 10/1 on request.

Tutti i dati forniti sono stati ottenuti usando olio con viscosità di circa 30 cSt a 50 °C. Campo di temperatura ammesso: -20 °C, +90 °C. Filtrazione assoluta: 25µ. I dati non sono impegnativi, CBF si riserva di apportare modifiche senza preavviso.
All performances and calibrations are carried out by using hydraulic oil with viscosity approx. 30 cSt at 50 °C. Temperature range: -20 °C, +90 °C. Filtration absolute: 25µ. The specifications are not binding, CBF reserves the right to introduce modifications without notice.

Sigla di ordinazione / Ordering code

OVC150-C - 01

Modello / Type

Codice Molle: **01, 02**
 Spring code: **01, 02**

Molle - Springs			
Codice Code	Taratura standard Standard setting bar (Q=5 l/min)	Campo di taratura Adj. pressure range bar	Colore Colour
01	100	20 ÷ 200	Bianco / White
02	280	50 ÷ 350	Nero / Black